

Corrugated and Folded Cartons



Regular Shipping Cartons RSC

Product Code	Description (L x W x H)	Material	Quantity per Bundle / Pallet
Single Wall			
BXSTB005CBU3IRC	4" x 4" x 30"	32C Kraft	25/625
BXSTB007CBU3INO	8 1/2" x 6 1/2" x 5"	32C Kraft	25/1,500
BXSTB040CBU2INO	9" x 6" x 6"	29C Kraft	25/1,500
BXSTB062CBU3IRC	10" x 6" x 8"	32C Kraft	25/125
BXSTB036CBU3INO	10" x 10" x 12"	32C Kraft	25/500
BXSTB004CBU3IRC	11 1/4" x 8 3/4" x 4"	32C Kraft	25/1,000
BXSTB008CBU3INO	11 1/4" x 8 3/4" x 5"	32C Kraft	25/750
BXSTB001CBU3INO	11 1/4" x 8 3/4" x 6"	32C Kraft	25/750
BXSTB082CBU3INO	11 1/4" x 8 3/4" x 8"	32C Kraft	25/750
BXSTB006CBU3INO	11 1/4" x 8 3/4" x 9"	32C Kraft	25/750
BXSTB016CBU3IRC	11 1/4" x 8 3/4" x 9 1/2"	32C Kraft	25/500
BXSTB125CBU3INO	11 1/4" x 8 3/4" x 10"	32C Kraft	25/500
BXSTB020CBU2INO	11 1/4" x 8 3/4" x 11"	29C Kraft	25/500
BXSTB003CBU3IRC	11 1/4" x 8 3/4" x 12"	32C Kraft	25/500
BXSTB023CBU2INO	11 1/4" x 9 3/4" x 11"	29C Kraft	25/500
BXSTB004CBU3INO	11 1/4" x 9 3/4" x 12"	29C Kraft	25/500
BXSTB002CBU2INO	11 3/4" x 8 3/4" x 10 3/4"	29C Kraft	25/500
BXSTB047CBU3INO	12" x 6" x 6"	32C Kraft	25/1,125
BXSTB062CBU3INO	12" x 9" x 3"	32C Kraft	25/1,000
BXSTB086CBU3IRC	12" x 9" x 4"	32C Kraft	25/750
BXSTB063CBU3INO	12" x 9" x 6"	32C Kraft	25/750
BXSTB013CBU3INO	12" x 9" x 9"	32C Kraft	25/750
BXSTB031CBU2INO	12" x 9" x 10"	29C Kraft	25/500
BXSTB014CBU2INO	12" x 9" x 12"	29C Kraft	25/500
BXSTB080CBU3INO	12" x 12" x 10"	32C Kraft	25/500

Note: Not all products stocked.

Regular Shipping Cartons RSC (cont'd)



Product Code	Description (L x W x H)	Material	Quantity per Bundle / Pallet
BXSTB035CBU3INO	12" x 12" x 12"	32C Kraft	25/500
BXSTB037CBU2INO	12 1/8" x 10 1/2" x 9 1/8"	29C Kraft	25/500
BXSTB038CBU2INO	12 1/4" x 8 7/8" x 11 5/8"	29C Kraft	25/500
BXSTB017CBU3INO	12 1/4" x 9 1/4" x 9"	32C Kraft	25/500
BXSTB010CBU3INO	12 1/4" x 9 1/4" x 10"	32C Kraft	25/750
BXSTB021CBU2INO	12 1/4" x 9 3/4" x 13"	29C Kraft	25/500
BXSTB014CBU3INO	12 1/4" x 12 1/4" x 8"	32C Kraft	25/500
BXSTB043CBU2INO	12 1/2" x 9" x 4 1/2"	29C Kraft	25/750
BXSTB018CBU3INO	14" x 10" x 10"	32C Kraft	25/500
BXSTB026CBU2INO	14 1/4" x 8 3/4" x 7"	29C Kraft	25/750
BXSTB030CBU3IRC	14 1/2" x 8 3/4" x 6"	32C Kraft	25/500
BXSTB004CBU2INO	14 3/4" x 8 3/4" x 10 3/4"	29C Kraft	25/500
BXSTB043CBU3INO	15" x 15" x 15"	32C Kraft	25/125
BXSTB022CBU2INO	15 1/4" x 8 3/4" x 11"	29C Kraft	25/500
BXSTB039CBU3INO	15 5/8" x 9 5/8" x 12"	32C Kraft	25/500
BXSTB014CBUCINO	16" x 12 1/4" x 4"	40C Kraft	25/500
BXSTB108CBU3INO	16" x 16" x 3"	32C Kraft	25/375
BXSTB109CBU3INO	16" x 16" x 4"	32C Kraft	25/500
BXSTB110CBU3INO	16" x 16" x 5"	32C Kraft	20/360
BXSTB004CBU2IMO	16 7/8" x 7 7/8" x 3 7/8"	29C Kraft	25/750
BXSTB027CBU3IRC	17 1/4" x 11 1/4" x 8"	32C Kraft	25/500
BXSTB015CBU2INO	17 1/4" x 11 1/4" x 8 3/4"	29C Kraft	25/375
BXSTB093CBU3INO	17 1/4" x 11 1/4" x 9 3/4"	32C Kraft	25/375
BXSTB027CBU2INO	17 1/2" x 11 1/2" x 6"	29C Kraft	25/500
BXSTB028CBU2INO	17 1/2" x 11 1/2" x 10"	29C Kraft	25/375
BXSTB005CBU2INO	17 5/8" x 11 5/8" x 11 5/8"	29C Kraft	25/525
BXSTB006CBU2INO	17 5/8" x 14 5/8" x 11 5/8"	29C Kraft	25/250
BXSTB057CBU3INO	18" x 12" x 6"	32C Kraft	25/375
BXSTB024CBU3INO	18" x 12" x 9"	32C Kraft	25/375
BXSTB030CBU2INO	18" x 12" x 12"	29C Kraft	25/250
BXSTB020CBU3INO	18" x 15" x 10"	32C Kraft	25/250
BXSTB033CBU2INO	18 1/2" x 12 1/2" x 10 1/2"	29C Kraft	25/375
BXSTB018CBU2INO	19 1/2" x 12 1/2" x 9"	29C Kraft	25/375
BXSTB040CBU3INO	20" x 14" x 16"	32C Kraft	25/125
BXSTB054CBU3IRC	20 3/4" x 14" x 5"	32C Kraft	20/360
BXSTB015CBU3INO	22 1/2" x 12 3/8" x 10"	32C Kraft	25/250
BXSTB001CBUGIKU	23" x 18" x 20 1/2"	23C Kraft	25/125
BXSTB016CBUCINO	24 3/4" x 12 5/8" x 5 1/2"	40C Kraft	25/375

CUSTOMERS WHO PURCHASED THESE ITEMS ALSO PURCHASED:



- Carton Sealing Tape [p 7](#)
- Gummed Tape [p 7](#)
- Bubble Wrap [p 16](#)
- Foam Rolls [p 17](#)
- Kraft Rolls [p 19](#)
- Stretch Film [p 22](#)
- Shipping Labels [p 24](#)
- Packing Slip Envelopes [p 24](#)

Regular Shipping Cartons RSC (cont'd)

Product Code	Description (L x W x H)	Material	Quantity per Bundle / Pallet
Double Wall			
BXSTB002CBUBINO	12" x 9" x 6"	42BC Kraft	20/360
BXSTB003CBUBINO	12" x 9" x 9"	42BC Kraft	20/400
BXSTB008CBU8INO	12" x 9" x 12"	42BC Kraft	20/320
BXSTB001CBUBINO	12 3/16" x 9 1/4" x 10"	42BC Kraft	20/320
BXSTB009CBU8INO	17 1/2" x 11 1/2" x 9 1/2"	48BC Kraft	20/240
BXSTB010CBUBINO	18" x 12" x 9"	42BC Kraft	20/240
BXSTB010CBU8INO	19 1/2" x 12" x 12 1/8"	48BC Kraft	20/160

Custom printing and sizes available

Wide Format Boxes

Product Code	Description (L x W x H)	Material	Quantity / Case
BXSTB017CBUHIRC	3 1/2" x 3 1/2" x 24"	44B Kraft	10
BXSTB019CBUHIRC	3 1/2" x 3 1/2" x 36"	44B Kraft	10
BXSTB020CBUHIRC	3 1/2" x 3 1/2" x 48"	44B Kraft	10
BXSTB021CBUHIRC	3 1/2" x 3 1/2" x 60"	44B Kraft	10
BXSTB010CBUHIRC	5" x 5" x 38"	44B Kraft	20
BXSTB003CBUHIRC	5" x 5" x 48"	44B Kraft	20



Record Storage Box (Banker's Box)

Product Code	Description (L x W x H)	Material	Quantity per Bundle / Pallet
BXRSB001WHUDIMO	15" x 12" x 10"	White	10/130

Cut-Out Wraps (Sheet Savers)

Product Code	Description (L x W x H)	Material	Quantity per Bundle / Pallet
BXSSB131CBUDINO	13" x 19" x 3/4" COW variable depth 1, 2, 3, 4 inch	32B Kraft	25/350
BXSSB192CBUDINO	19" x 25" x 3/4" COW variable depth 1, 2, 3, 4 inch	32B Kraft	25/350
BXSSB235CBUDINO	23" x 35" x 3/4" COW variable depth 1, 2, 3, 4 inch	32B Kraft	25/350
BXSSB253CBUDINO	25" x 38" x 3/4" COW variable depth 1, 2, 3, 4 inch	32B Kraft	25/325



Note: Not all products stocked.

Chipboard/Padding Board (Slip Sheets) Bundled

Product Code	Description (L x W x H)	Material	Quantity per Bundle / Pallet
CHKRU001CBU2ICM	8 ½" x 11"	25PT Kraft	750
CHKRU002CBU2ICM	8 ½" x 14"	25PT Kraft	750
CHKRU003CBU2ICM	11" x 17"	25PT Kraft	375
CHKRU004CBU2ICM	12" x 18"	25PT Kraft	375
CHKRU005CBU2ICM	17 ½" x 22 ½"	25PT Kraft	340
CHKRU006CBU2ICM	19" x 25"	25PT Kraft	340
CHKRU007CBU2ICM	23" x 35"	25PT Kraft	170
CHKRU008CBU2ICM	25" x 38"	25PT Kraft	170
CHKRU009CBU2ICM	28" x 40"	25PT Kraft	150
CHKRU010CBU2ICM	30" x 40"	25PT Kraft	150
CHKRU011CBU2IZB	17 ¼" x 28 ¼"	25PT Kraft	188
CHKRU012CBU2IZB	22" x 34"	25PT Kraft	123
CHKRU013CBU2IZB	22 ½" x 34 ½"	25PT Kraft	119
CHKRU014CBU2IZB	24" x 36"	25PT Kraft	107
CHKRU015CBU2IZB	24 ¼" x 36 ¼"	25PT Kraft	107
CHKRU016CBU2IZB	28 ½" x 34 ½"	25PT Kraft	94
CHKRU017CBU2IZB	32" x 40"	25PT Kraft	72
CHKRU018CBU3IZB	32" x 40"	35PT Kraft	52
CHKRU019CBU4IZB	32" x 40"	45PT Kraft	36

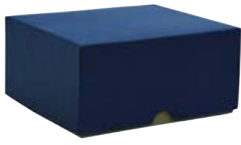
Chipboard/Padding Board (Slip Sheets) Loose on Skid

Product Code	Description (L x W x H)	Material	Quantity per Bundle / Pallet
CWKFS334CBA1IZB	33" x 44"	12PT Kraft	3,500
CWKFS334CBA8IZB	33" x 44"	18PT Kraft	2,500
CWKFS121CBAGIZB	12" x 18"	25PT Kraft	16,000
CWKFS117CBAHIZB	11" x 17"	45PT Kraft	8,000

Corrugated Pads

Product Code	Description (L x W x H)	Material	Quantity / Pallet
BXPAP001CBUAINO	48" x 40"	23B Kraft	300
BXPAP008CBU3IRC	65" x 58"	32C Kraft	400

Business Card Boxes – Rigid



Product Code	Description (L x W x H)	Capacity	Quantity / Case
BXBCB653CBURIZB	6 5/8" x 3 5/8", Blue	500	50
BXBCB453CBURIZB	4 1/4" x 3 5/8", Blue	250	50
BXBCB001CBUEINO	7 3/8" x 2", Kraft	1,000	50



Business Card Boxes – Folded

Product Code	Description (L x W x H)	Capacity	Quantity / Case
BXBCB362WHUFIZB	3 5/8" x 3 1/4", White	500	150
BXBCB633WHUFIZB	6 1/8" x 3 3/4", White	250	100



Folded Letterhead Boxes – 1 and 2 piece

Product Code	Description (L x W x H)	Capacity	Quantity / Case
BXLBB112WHUFIZB	11" x 8 1/2" x 2", White	500	100
BXLBB113WHUFIZB	11" x 8 1/2" x 3 3/4", White	1,000	100
BXLBB142WHUFIZB	14" x 8 1/2" x 2", White	500	100

Note: Not all products stocked.